



Price List
2008

Type A Recessed

Tail length required (S/M/L).

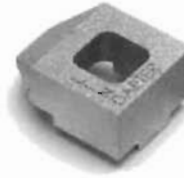


Size	Code	Price/each (£)	Box Quantity
M08	A08	0.60	100
M10	A10	1.24	100
M12	A12	1.76	100
M16	A16	2.43	50
M20	A20	3.68	50
M24	A24	8.70	20

■ Also available in HDG.

Type B Flat Top

Tail length required (S/M/L).



Size	Code	Price/each (£)	Box Quantity
M08	B08	0.93	100
M10	B10	1.75	100
M12	B12	2.20	100
M16	B16	3.40	50
M20	B20	5.48	50
M24	B24	9.90	20

■ Also available in HDG.

Type AF High Friction (HDG)

Tail length required (S/M).



Size	Code	Price/each (£)	Bag Quantity
M12	AF12	3.86	25
M16	AF16	6.78	20
M20	AF20	8.79	10
M24	AF24	20.83	5

Type CF High Friction Clamp (HDG)



Size	Code	Price/each (£)	Box Quantity
M12	CF12	3.13	25
M16	CF16	4.64	20
M20	CF20	6.89	10

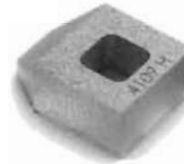
Type LR Self Adjusting



Size	Code	Price/each (£)	Box Quantity
M10	LR10A	2.57	50
M12	LR12A	4.01	50
M16	LR16A	5.66	25
M20	LR20A	8.61	10
M24	LR24A	10.42	5

■ Also available in HDG.

Type BSNT



Size	Code	Price/each (£)	Box Quantity
M12	BS12P4109	2.73	100
M16	BS16P3560	4.51	50
M20	BS20P3208	6.42	25
M24	BS24P3870	14.49	10

■ Also available in HDG.

Type LS (Stainless Steel)



Size	Code	Price/each (£)	Box Quantity
M10	LS10	7.40	100
M12	LS12	8.24	50
M16	LS16	11.34	25
M20	LS20	13.23	20

Type BSLN



Size	Code	Price/each (£)	Box Quantity
M12	BS12P3777	3.56	50
M16	BS16P2929	4.68	50

■ Also available in HDG.

Type D2 Setscrew Tail (Recessed)



Size	Code	Price/each (£)	Box Quantity
M10	D210	3.76	100
M12	D212	3.76	100
M16	D216	5.28	50
M20	D220	7.14	25
M24	D224	15.22	10

■ Also available in HDG.

Type D3 Setscrew Tail (Flat Top)



Size	Code	Price/each (£)	Box Quantity
M12	D312	3.76	100
M16	D316	5.28	50

■ Also available in HDG.

Please read in conjunction with current Lindapter catalogue. **Please order in box quantities. Split boxes will be charged at 25% extra.**
All products are available through our national distributor network.

■ Type W Washer



Size	Code	Price/each (£)
M08	W08	0.52
M10	W10	0.77
M12	W12	0.94
M16	W16	1.36
M20	W20	2.69
M24	W24	5.21

■ Also available in HDG.

■ Type CW Washer



Size	Code	Price/each (£)	Box Quantity
M08	CW08	0.35	100
M10	CW10	0.37	250
M12	CW12	0.46	250
M16	CW16	0.58	250
M20	CW20	0.87	100
M24	CW24	2.51	100

■ Also available in HDG.

■ Type T Tip



Size	Code	Price/each (£)
M12	T12	0.93
M16	T16	1.36
M20	T20	2.69
M24	T24	5.21

■ Also available in HDG.

■ Type AFCW Clipped Washer (HDG)

For use with Type AF High Friction Clamp only.



Size	Code	Price/each (£)	Box Quantity
M12	AFCW12	0.49	250
M16	AFCW16	0.60	200
M20	AFCW20	0.94	200

■ Type AFW Adapter Washer (HDG)

For use with Type AF High Friction Clamp only.



Size	Code	Price/each (£)	Box Quantity
M12	AFW12	1.07	500
M16	AFW16	1.19	250
M20	AFW20	1.72	250
M24	AFW24	2.69	100

■ Type F9 Nut Clamp



Size	Code	Price/each (£) Without Bolt (NB)	Price/each (£) With Bolt & Nut (NC)
M10	F910	5.00	5.82
M12	F912	12.10	13.55
M16	F916	17.06	19.74
M20	F920	25.47	28.74
M24	F924	76.02	83.18

■ Also available in HDG.

■ Type AFP1 Packings (HDG)

For use with Type AF High Friction Clamp only.



Size	Code	Price/each (£)	Box Quantity
M12	AFP112	1.71	100
M16	AFP116	1.97	100
M20	AFP120	2.03	50
M24	AFP124	3.94	25

■ Type AFP2 Packings (HDG)

For use with Type AF High Friction Clamp only.



Size	Code	Price/each (£)	Box Quantity
M12	AFP212	1.96	50
M16	AFP216	2.34	50
M20	AFP220	2.49	25
M24	AFP224	5.25	10

Please read in conjunction with current Lindapter catalogue. **Please order in box quantities. Split boxes will be charged at 25% extra.**

All products are available through our national distributor network.

Type P1 Packings (Short)



Size	Code	Price/each (£)	Box Quantity
M08	P1S08	0.49	500
M10	P1S10	0.58	250
M12	P1S12	0.62	200
M16	P1S16	0.83	100
M20	P1S20	1.54	100
M24	P1S24	3.28	50

■ Also available in HDG.

Type P2 Packings (Short)



Size	Code	Price/each (£)	Box Quantity
M08	P2S08	0.66	250
M10	P2S10	0.93	100
M12	P2S12	0.99	100
M16	P2S16	1.45	100
M20	P2S20	2.72	50
M24	P2S24	8.16	25

■ Also available in HDG.

Type P1 Packings (Long)



Size	Code	Price/each (£)	Box Quantity
M10	P1L10	1.51	100
M12	P1L12	1.83	100
M16	P1L16	2.10	100
M20	P1L20	2.42	50
M24	P1L24	5.99	25

■ Also available in HDG.

Type P2 Packings (Long)



Size	Code	Price/each (£)	Box Quantity
M10	P2L10	1.58	100
M12	P2L12	2.12	100
M16	P2L16	2.88	50
M20	P2L20	5.77	25
M24	P2L24	11.05	20

■ Also available in HDG.

Type HC, HW Hemispherical Cups and Washers

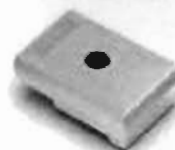


Size	Price/each Cup (£)	Price/each Washer (£)
M06	-	0.44
M08	-	0.46
M10	1.18	0.51
M12	1.22	0.58
M16	1.95	1.09
M20	4.05	2.04
M24	6.05	5.49
M30	10.04	8.01

■ Also available in HDG.
 Sizes above M30 can be quoted upon request.

Type RC

Die No. 42.

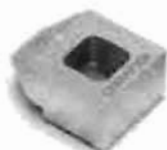


Code	Price/each (£)
RCS	8.64

Drilled/undrilled.
 Hole size and position to be specified with order. For further assistance please contact Lindapter.

Type BR

Tail length required (S/M).



Size	Code	Price/each (£)	Box Quantity
M12	BR12	2.07	100
M16	BR16	2.72	50
M20	BR20	4.58	25
M24	BR24	11.15	20

■ Also available in HDG.

Type Lindapter HD-Hard/Soft



Please contact Lindapter for pricing details.
 Only available in M20 & M24.
 Leg length or rail type required.

Type Lindapter HD-Spring

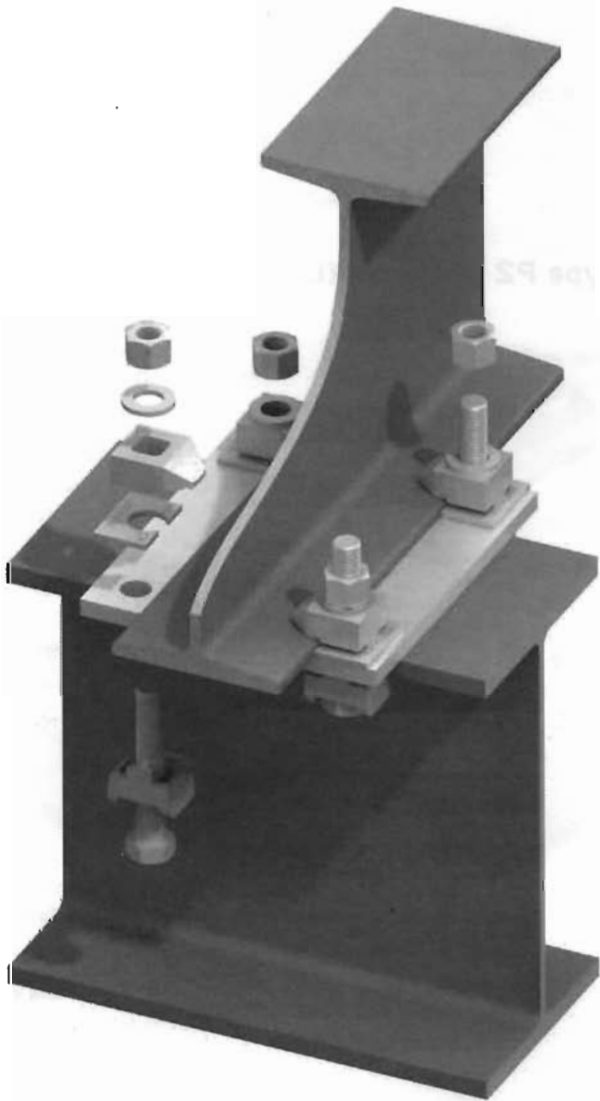


Please contact Lindapter for pricing details.
 Only available in M20 & M24.
 Leg length or rail type required.

Please read in conjunction with current Lindapter catalogue. **Please order in box quantities. Split boxes will be charged at 25% extra.**
 All products are available through our national distributor network.

Type GC Girder Clamp

Please contact Lindapter for pricing details.



Type SC Shackle Clamp

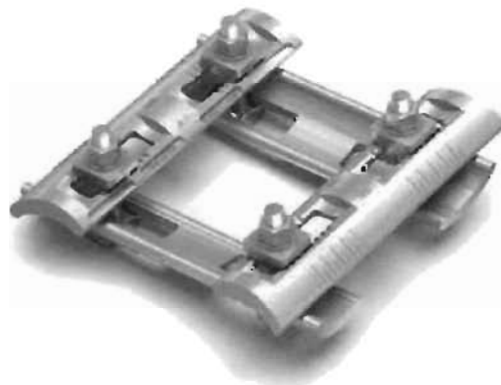
Please contact Lindapter for pricing details.



Type FC Flush Clamp

Code	Price/each (£)
FC16	66.00

■ Only available in M16 bolt size.



Please read in conjunction with current Lindapter catalogue. **Please order in box quantities. Split boxes will be charged at 25% extra.**

All products are available through our national distributor network.

Hollo-Bolt



Size	Code	Price/each (£)	Box Quantity
M08 Size 1	HB08-1	3.68	100
M08 Size 2	HB08-2	5.81	100
M08 Size 3	HB08-3	6.29	50
M10 Size 1	HB10-1	4.67	50
M10 Size 2	HB10-2	7.19	50
M10 Size 3	HB10-3	7.84	50
M12 Size 1	HB12-1	5.55	50
M12 Size 2	HB12-2	8.59	50
M12 Size 3	HB12-3	9.50	25
M16 Size 1	HB16-1	7.16	25
M16 Size 2	HB16-2	9.59	25
M16 Size 3	HB16-3	11.18	20
M20 Size 1	HB20-1	15.25	10
M20 Size 2	HB20-2	21.96	10
M20 Size 3	HB20-3	23.58	10

Countersunk Hollo-Bolt



Size	Code	Price/each (£)	Box Quantity
M08 Size 1	HBCSK08-1	5.07	100
M08 Size 2	HBCSK08-2	8.91	100
M08 Size 3	HBCSK08-3	9.14	100
M10 Size 1	HBCSK10-1	6.42	50
M10 Size 2	HBCSK10-2	10.23	50
M10 Size 3	HBCSK10-3	10.87	50
M12 Size 1	HBCSK12-1	7.34	50
M12 Size 2	HBCSK12-2	11.16	50
M12 Size 3	HBCSK12-3	13.37	25
M16 Size 1	HBCSK16-1	9.64	25
M16 Size 2	HBCSK16-2	16.09	25
M16 Size 3	HBCSK16-3	16.62	20

Hollo-Bolt (HDG)



Size	Code	Price/each (£)	Box Quantity
M08 Size 1	HB08-1HDG	4.07	100
M10 Size 1	HB10-1HDG	5.13	50
M12 Size 1	HB12-1HDG	6.11	50
M16 Size 1	HB16-1HDG	7.87	25
M20 Size 1	HB20-1HDG	16.77	10

■ Size 2 and above are available on application

■ Hollo-Bolts are also available in Stainless Steel, Sheraplex, Buttonhead and Security Buttonhead - P.O.A.

FlushFit Hollo-Bolt



Size	Code	Price/each (£)	Box Quantity
M08 Size 1	HBFF08-1	5.24	100
M10 Size 1	HBFF10-1	6.62	50
M12 Size 1	HBFF12-1	7.56	50

■ 1 peg per box supplied FOC.
Split box or extra pegs charged separately.

Lindibolt 2



Size	Code	Price/each (£)	Box Quantity
M10	LBM10	5.99	25
M12	LBM12	7.60	25
M16	LBM16	9.31	10
M20	LBM20	15.72	10
M24	LBM24	28.21	5

Please read in conjunction with current Lindapter catalogue. **Please order in box quantities. Split boxes will be charged at 25% extra.**
All products are available through our national distributor network.

Type AW Alphawedge

To suit Richard Lees Steel Decking.



Size	Code	Price/each (£)	Bag Quantity
M06	AW06-ASS	1.09	50
M08	AW08-ASS	1.09	50
M10	AW10-ASS	1.09	50

Type MW2 Multiwedge 2

To suit Kingspan Multi-Deck MD60 & MD80.



Size	Code	Price/each (£)	Bag Quantity
M06	MW206-ASS	1.02	50
M08	MW208-ASS	1.02	50
M10	MW210-ASS	1.02	50

Type VN V Nuts

To suit various decking profiles.



Size	Code	Price/each (£)	Bag Quantity
M06	VN06	0.63	250
M08	VN08	0.63	250
M10	VN10	0.63	250

■ NB Rod not Supplied.

Type TR60 Wedge

To suit SMD TR60/80.



Size	Code	Price/each (£)	Bag Quantity
M06	TR6006-ASS	0.89	50
M08	TR6008-ASS	0.89	50
M10	TR6010-ASS	0.89	50

Type TC Toggle Clamp

With nuts as standard



Size	Code	Price/each (£)	Bag Quantity
M08	TC208-ASS	1.55	100
M10	TC210-ASS	1.55	100

Type SD2 Slimdek2 Fixing

To suit Comflor CF225.



Size	Code	Price/each (£)	Bag Quantity
M06	SD206	3.15	20
M08	SD208	3.15	20
M10	SD210	3.15	20

Purlin Hangers/Z Beam Clamps



Code	Price/each (£)	Bag Quantity
Z10	0.95	100
HCW30	0.99	100
HCW31	0.39	100
HCW34	2.58	25

■ Applies to HCW34 only. Wrap around purlin, need purlin depth.

Type WF WebFix



Size	Price/each (£)	Bag Quantity
Size M10 only	0.94	100

Please read in conjunction with current Lindapter catalogue. **Please order in box quantities. Split boxes will be charged at 25% extra.**

All products are available through our national distributor network.

■ Type FL Flange Clamp



Plain Hole

Size	Code	Price/each (£)	Bag Quantity
M06	FL16D	2.01	100
M08	FL1D	2.01	100
M10	FL2D	2.21	50
M12	FL3D	2.52	50
M12	FL4D	2.70	25

■ N.B. Rod not supplied. FL2D is also available in Stainless Steel (FLST2D).

Tapped Hole

Size	Code	Price/each (£)	Bag Quantity
M06	FL16T	2.16	100
M08	FL1T	2.16	100
M10	FL2T	2.34	50
M12	FL3T	2.64	50

■ Type SH Strap Hanger (Mild Steel)

Nominal Bore (mm)	Price/each (£) Without Hanger Nut	Price/each (£) With Hanger Nut	Tapping	Bag Quantity
25	0.51	0.68	M10	100
32	0.54	0.76	M10	100
40	0.57	0.79	M10	75
50	0.58	0.81	M10	75
65	0.62	0.84	M10	100
80	0.73	0.94	M10	100
100	1.28	1.46	M10	10
125	1.52	1.84	M12	10
150	1.71	1.97	M12	10
200	3.08	3.54	M16	10

■ Quantity discount available.



■ Type FLS Swivel Flange Clamp



Size	Code	Price/each (£)	Bag Quantity
M08	FLS08	3.34	25
M10	FLS10	2.98	25

■ Type SW Swivel Attachment



Size	Code	Price/each (£)	Box Quantity
M10	SW10	0.75	50

■ Type LC Lindiclip



Size	Code	Price/each (£)	Bag Quantity
M06	LC	1.19	100
M08	LCM08	1.19	100

■ Type F3 Flange Clamp (HDG)



Size	Price/each (£) Without Bolt (NB)	Price/each (£) With Bolt & Nut (NC)
M08	4.31	4.94
M10	4.87	5.64
M12	7.12	8.55
M16	14.00	16.88
M20	25.71	30.23

■ Type F3 BICCA



Please contact Lindapter for pricing details. Only available in M10 bolt size.

Please read in conjunction with current Lindapter catalogue. **Please order in box quantities. Split boxes will be charged at 25% extra.** All products are available through our national distributor network.

■ Floor-Fast



Size	Code	Price/each (£)	Box Quantity
M08	FF08A	3.44	50
M10	FF10A	3.44	50
M12	FF12A	2.89	50

■ Only M10 & M12 available in HDG, with slotted screw. All sizes available in Stainless Steel.

■ Grate-Fast



Size	Code	Price/each (£)	Bag Quantity
M08	GF08	3.87	50
M10	GF10	2.71	50
M10	GF210	2.71	50

■ GF3030 (Sheraplex)



Code	Price/each (£)	Bag Quantity
GF3030	1.30	100

Please read in conjunction with current Lindapter catalogue. **Please order in box quantities. Split boxes will be charged at 25% extra.**

All products are available through our national distributor network.